



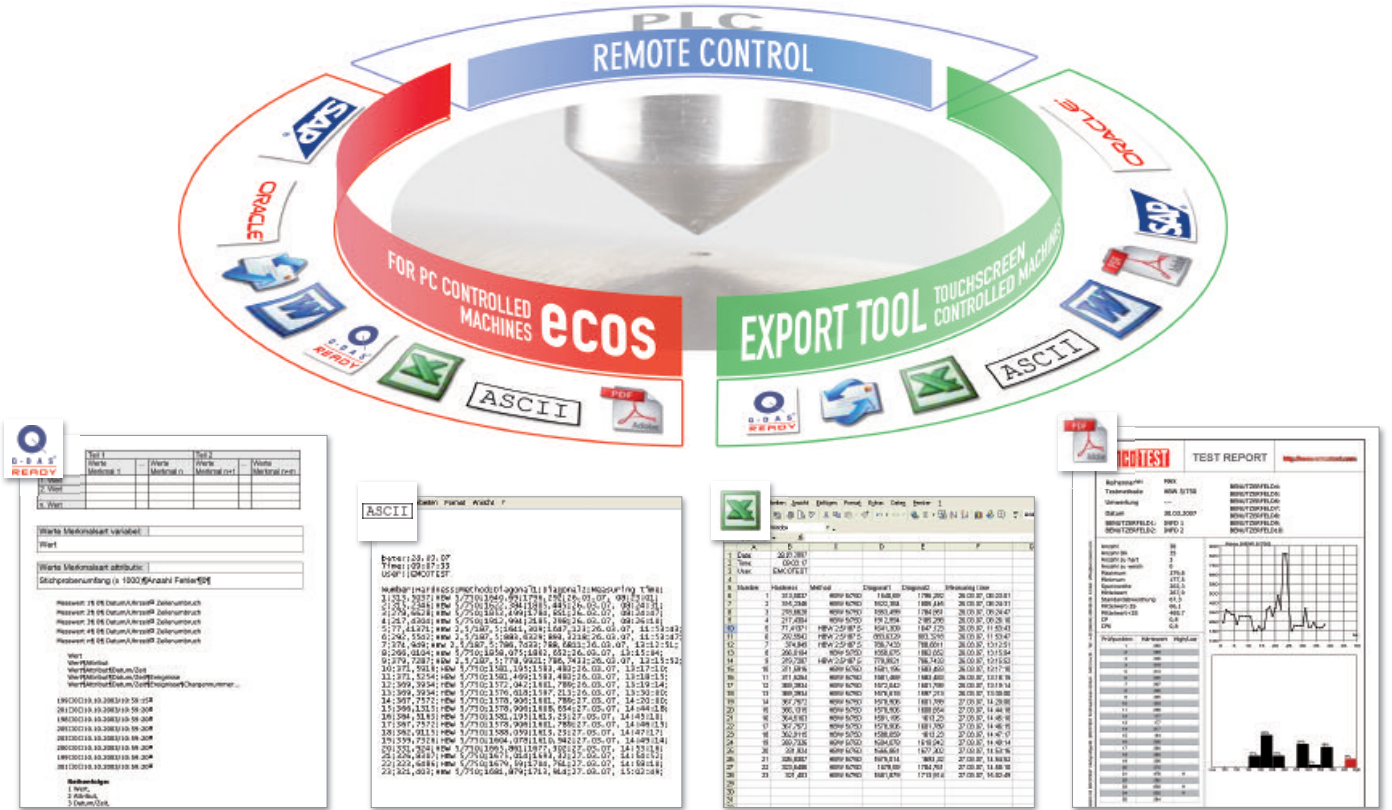
M1C
M4-E / Jom G3
M4C / M5C G3
M4R G3
V4C / V5C G3
VR5C

**Data export &
Network connection**

Flexible and efficient data export for every requirement!

The availability of the test results in the central data structures of your business is an essential prerequisite for meeting the great demands placed on modern quality assurance.

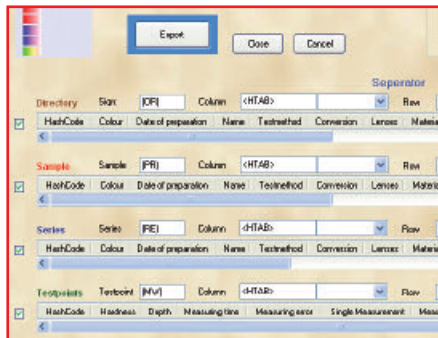
EMCO-TEST software solutions enable all hardness testing data to be displayed in ASCII format and thus to be processed and archived for a wide variety of purposes.



In some applications (Q-DAS, SAP, Oracle, etc.) the software connection takes place indirectly via the basic ASCII format and a customized solution must be created.

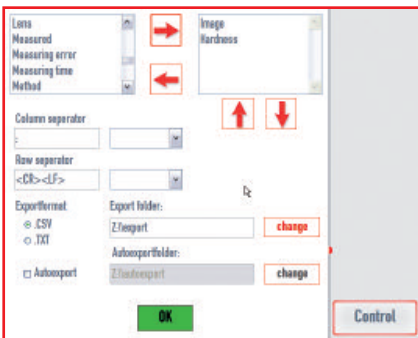
ecos Software PC controlled machines

A multiplicity of test information can be displayed simply and clearly via the export function. Users can set up a variety of export schemes with relevant data filters.



Export Tool via touchscreen controlled machines

The export tool allows data fields to be freely defined and to export readings and results into other applications. Data is displayed in the basic .CSV and .TXT format (JPG for pictures).



Remote Control link in PLC System

The remote control enables users to link testing machine to the manufacturing process and control the system remotely. All commands for the control are documented in detail.



EMCO-TEST Prüfmaschinen GmbH
 5431 Kuchl-Salzburg/Austria • Brennhoflehen-Kellau 174
 Tel. +43 62 44 20 4 38 • Fax +43 62 44 20 4 38-8
 email: office@emcotest.com • www.emcotest.com

EMCO-TEST
 YOUR FACTOR OF SAFETY.